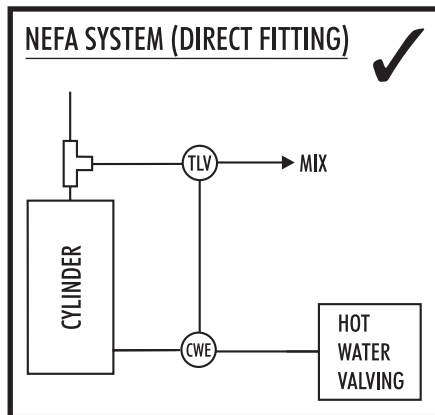
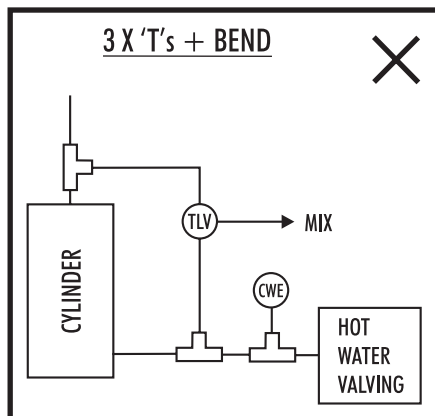
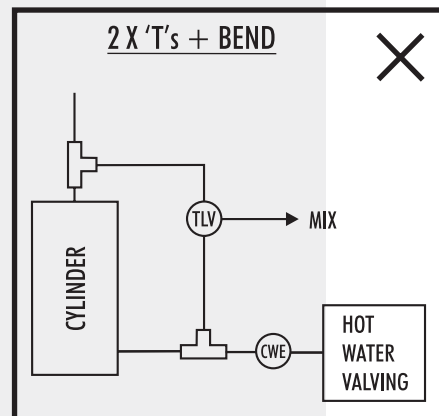


EASY CONNECTION TO TEMPERATURE LIMITING VALVE



Direct fitting eliminates the need for bends and tee pieces

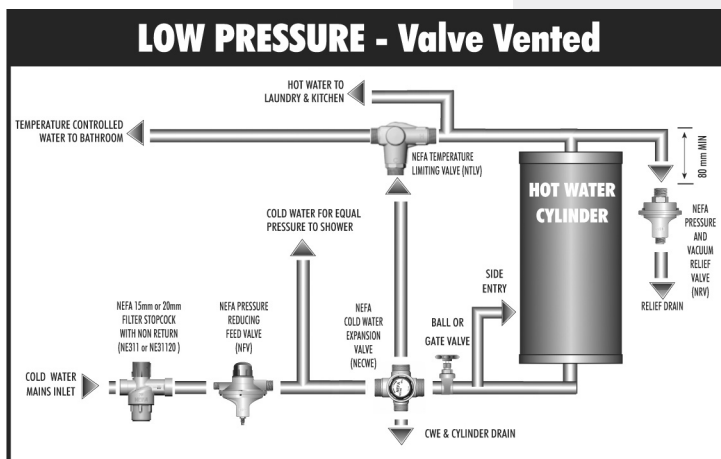
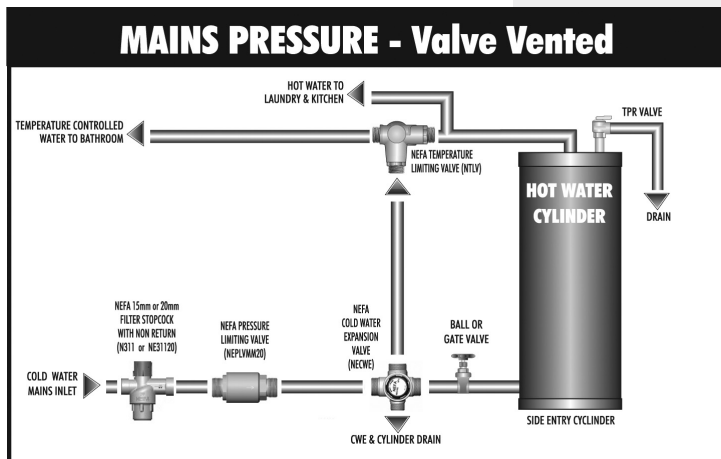
Warranty

Where Methven valving is purchased for use or on-sale in the context of any business, Methven undertakes to either repair or replace (at its option) that valving, if it is discovered that such valving contains a material defect, which arose in the course of manufacture. This undertaking shall not apply if:

1. The defect is brought to Methven's attention later than 2 years after the date of purchase, where the defect relates to washers, "O" rings and powder coating, or 5 years where the defect relates to any other valving componentry. Proof of purchase will be required.
2. There is a failure by any person to follow Methven's installation instructions or the valving is used other than in accordance with Methven's specifications.
3. Evidence cannot be produced which confirms that the relevant valving was purchased from a Methven authorised distributor.
4. Repair work is performed on the relevant valving by a person other than Methven, its authorised service agents or any plumber who has not received authorisation prior to proceeding with the work.

The above undertaking from Methven shall also apply to any purchaser of Methven valving who is a "Consumer" under the Consumer Guarantees Act 1993, in addition to any other right or remedy which such person may have under that Act. Methven shall in no way be liable to the purchaser or user of any valving, for any loss, damage (direct, indirect or consequential), cost or expense suffered or incurred by that person, otherwise than as provided in the above provisions, or as provided under the Consumer Guarantees Act 1993.

NEFA



Diagrams for illustrative purposes only

METHVEN

TELARC
ISO 9001
REGISTERED

Made in New Zealand by Methven Limited
Private Bag 19996, Avondale, Auckland, NZ.

For product assistance, technical and sales enquiries contact Methven Limited
Ph: 0800 804 222
Fax: 0800 805 222

Part No: 285011 Issue F

NEFA



- Integral non-return valve.
- Incorporates direct connection from cold feed to TLV
- Design of seat allows perfect washer contact maintaining excellent seating at low relief pressure settings.
- Diaphragm eliminates O-ring drag associated with normal piston type sealing.
- Easy to operate flushing.
- Dry spring construction.
- Forged DR Brass
- Valve can be used as cylinder drain stopcock.

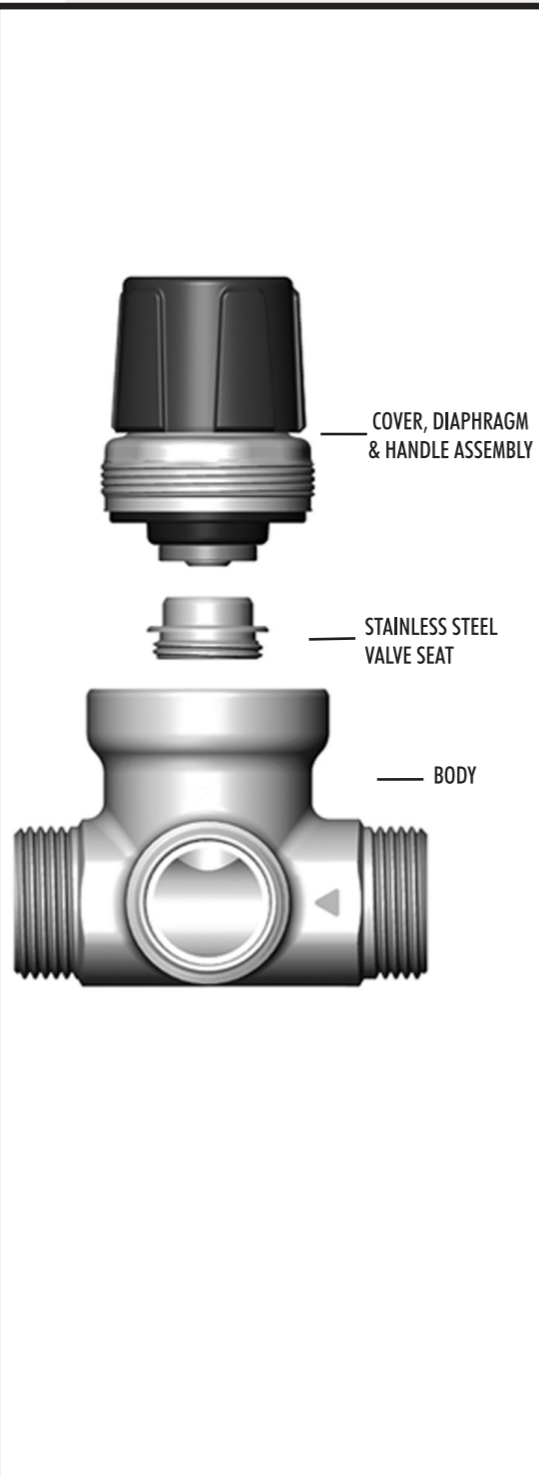
**COLD WATER
EXPANSION
VALVE**

SPECIFICATIONS

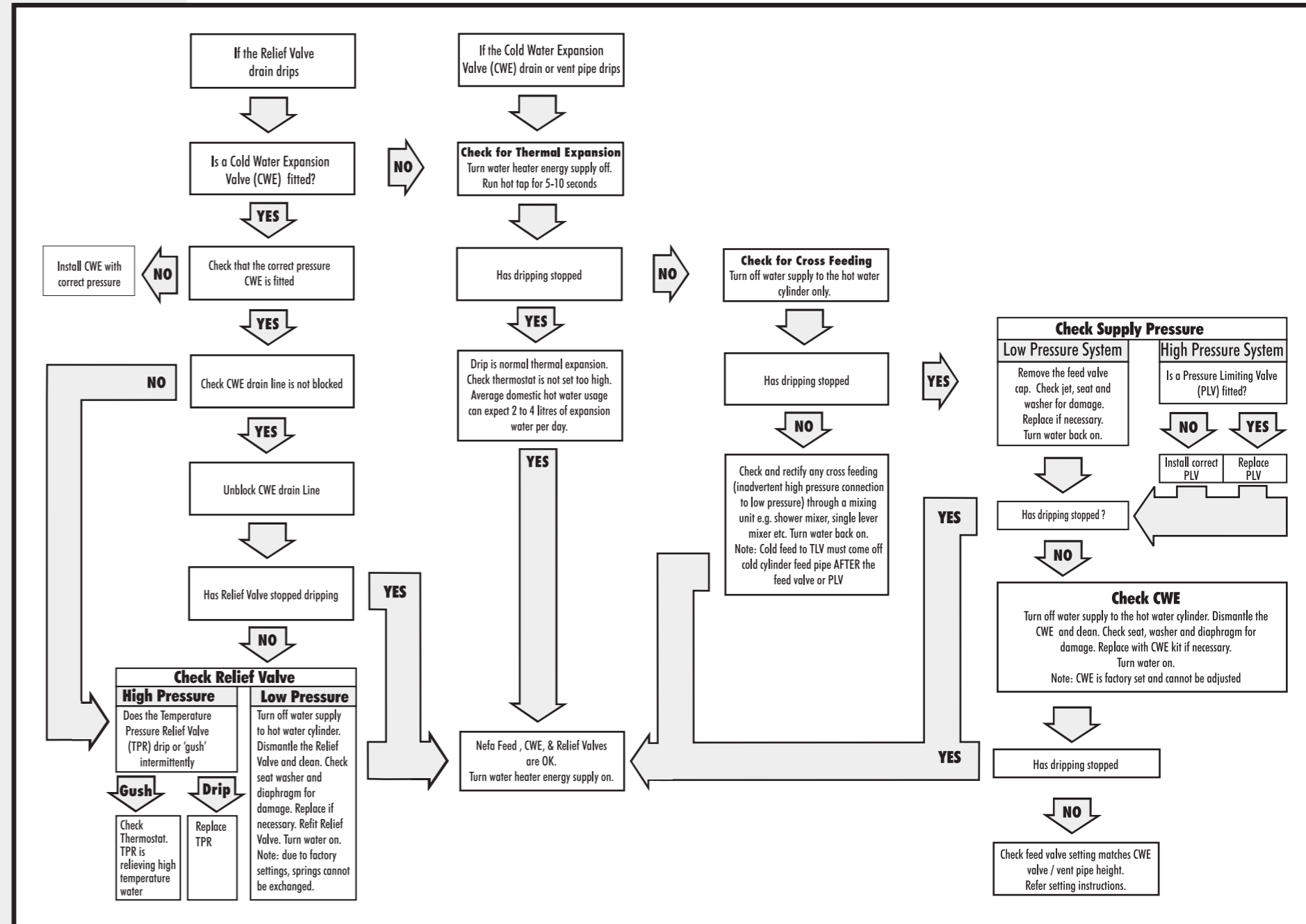
- 20mm male inlet, outlet and TLV outlet
- 15mm drain pipe connection
- Factory set for 7.6m and 850kPa systems
- Conforms to NZS 4608
- Stainless Steel seat standard

INSTALLATION

- Valves should always be fitted by a qualified plumber according to BIA G12 or NZS 4607
- Drain connection should always point vertically downwards, with TLV outlet pointing upwards
- CWE drain lines must fall continuously to a point where the outlet cannot be obstructed or blocked and where expansion and other vented water will not cause a hazard.
- CWE drain lines should not exceed 3 metres in length and should include no more than three 90 degree bends
- Install with direction of flow in line with arrow on valve body.



TROUBLESHOOTING FOR NEFA HOT WATER SYSTEMS



IMPORTANT

- For low pressure systems the **NEFA** Feed Valve setting must be reduced 1½ turns to avoid water wastage.
- For Mains Pressure systems a **NEFA** PLV must be fitted if the cold supply is greater than 500kPa.